

Wastewater EVAPORATORS

Gas Powered Evaporator Model G30

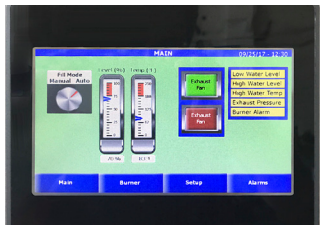
Vertical water tubes – The heart of the G30 gas powered evaporator is the innovative vertical water tube heat exchanger with internal flue gas passages engineered for high performance and efficient operation. It has an exceptionally large surface area designed for maximum heat transfer and outstanding product life. The vertical tubes are accessible from the top of the unit for easy inspection and cleaning. Utilizing surface combustion technology (SCT), the G30 is designed to run 24/7.

Problems with other designs – Horizontal tube heat exchangers are very difficult to clean. Only the top half of the top row of tubes is visible and accessible. The lower levels of tubes are not easily reached and cannot be inspected for their condition. Bottom heat evaporators can be cleaned, but with less than 50% efficiency they develop dangerous hot spots and are very costly to operate.

Applications – The G30 is ideal for processing:

- aqueous parts washing water
- machine shop coolant
- air compressor blowdown
- tumbling wash water
- dye penetrants
- cleaning solutions
- dye casting solutions
- Metal finishing
- Printing
- Floor scrubbers
- Metal working contaminated wastewater.

| SPECIFICATIONS | |
|----------------------|---------------------------------------------------------------------------------|
| Evaporation Rate | 30 Gallons per hour |
| Electrical | 115 single phase |
| Tank Capacity | 240 Gallons |
| Dimensions | 35"W x 65.5"L x 66.5"H |
| Liquid level control | RF Capacitance probe |
| Safety | Low/high level interlocks Manual fill interlock High temperature shut off |
| Operation control | Allen-Bradley |
| Temperature control | Thermocouple Type T temperature controller |
| Warranty | 2 years |



Allen-Bradley Touch Screen, PLC Control Panel.

TANK CONSTRUCTION:

- Interior wall - 316 stainless steel.
- High performance insulation is used to maintain heat.
- Outer protective skin - 304 stainless.
- "V" bottom of tank facilitates cleaning.
- Optional material: RA2205.

OTHER SIZES –

available with evaporation rates of 10, 18, 60 and 90 gallons per hour.

OTHER OPTIONS – Propane powered or Steam powered units.

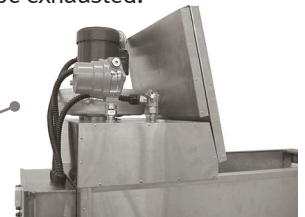
"V" bottom tank tilts toward 2 FPT drain with a removable home plate access port for easy cleaning.

Thermocouples (2) monitor heat exchanger operating parameters.

Liquid level control.

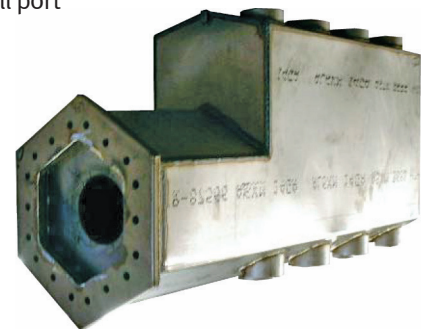
Rugged, quiet running, cast aluminum exhaust blower.

Mist eliminator compartment. Contaminants are captured before they can be exhausted.



Bi-fold door – folds back for inspection and cleaning.

Top loading fill port



HEAT EXCHANGER – is made of 316 stainless steel and has vertical water tubes that are easy to inspect from the top. Cleaning is a snap compared to horizontal tube designs. "V" bottom enhances water dynamics and maximizes heat transfer.

Wastewater Evaporators

■ Tel 978.256.3259 ■ Sales@wastewaterevaporators.com ■ www.wastewaterevaporators.com