

Gas Powered Evaporator Models G90 (G90-SA)

Why you'll like our design – The heart of the **G90** gas powered evaporator is an innovative vertical water tube heat exchanger with internal flue gas passages engineered for high performance and efficient operation. It has an exceptionally large surface area designed for maximum heat transfer and outstanding product life. The vertical tubes are accessible from the top of the unit for easy inspection and cleaning.

What is troubling about other designs – *Other Tubular heat exchangers* are very difficult to clean. Only the top half of the top row of tubes is visible and accessible. The lower levels of tubes are not easily reached and cannot be inspected for their condition. *Bottom heat evaporators* are easy to clean, but with less than 50% efficiency they are very costly to operate.

The G90 design comes out on top – It is ideal for processing:

- aqueous parts washing water • machine shop coolant
- air compressor blowdown • tumbling wash water
- dye penetrants • cleaning solutions • dye casting solutions
- other generally contaminated wastewater.

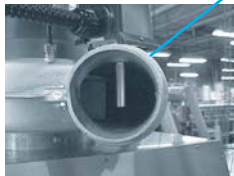
Thermocouples (2) monitor heat exchanger operating parameters

Liquid level control

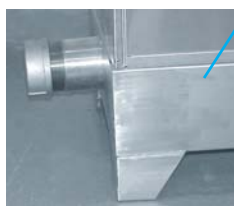


Bi-fold lid folds back to its storage position for easy access

Rugged, quiet running, cast aluminum exhaust blower



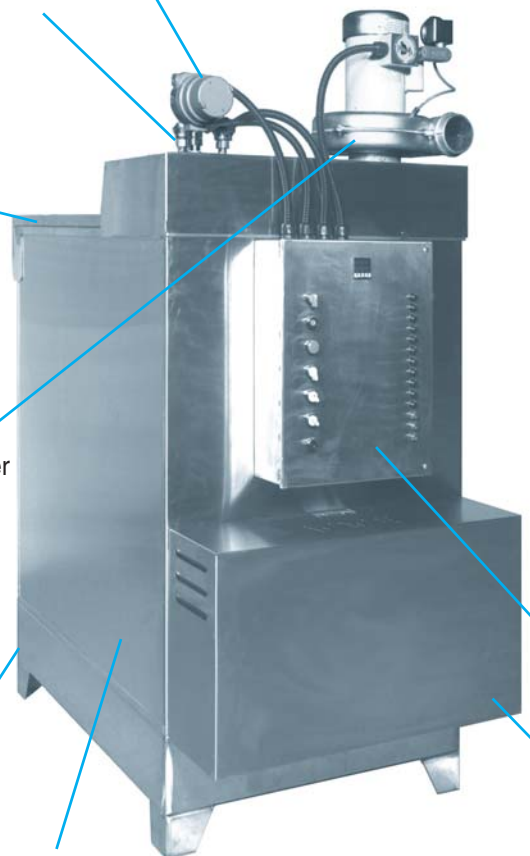
Exhaust temperature probe (optional)



4 NPT sediment drain

Tank construction:

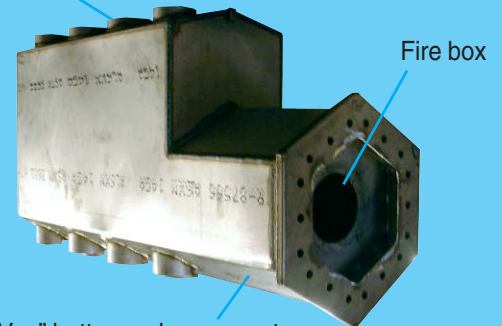
- Liner & heat exchanger - 316L stainless steel
- High performance insulation
- Outer protective skin - 304 stainless
- Optional materials: AL-6XN or C-276



SPECIFICATIONS	
Model	G90, G90-SA
Evaporation Rate	90 Gallons per hour
Electrical Specifications	115 to 230 volt, single phase 208 to 240 volt or 480 volt 3 ph.
Tank Capacity	480 Gallons
Dimensions	47"W x 94"L x 74"H
Weight	1150 pounds
Liquid level control	RF Capacitance probe
Safety	Low/high level interlocks Manual fill interlock High temperature shut off
Operation control	Programmable logic controller
Temperature control	Thermocouple Type T temperature controller
Warranty	Two years

Stainless Steel Heat Exchanger

Vertical water tubes are easy to inspect and clean from the top.



"Vee" bottom enhances water dynamics maximizing heat transfer.

Programmable Logic Controller (PLC) monitors operation parameters
Indicator lights display operation status

Gas heater/blower compartment

OTHER PRODUCT OFFERINGS

- Propane or Steam powered units
- Other sizes with evaporation rates of 4, 10, 18, 30, 55 and 70 gallons per hour

Specifications subject to change without notice